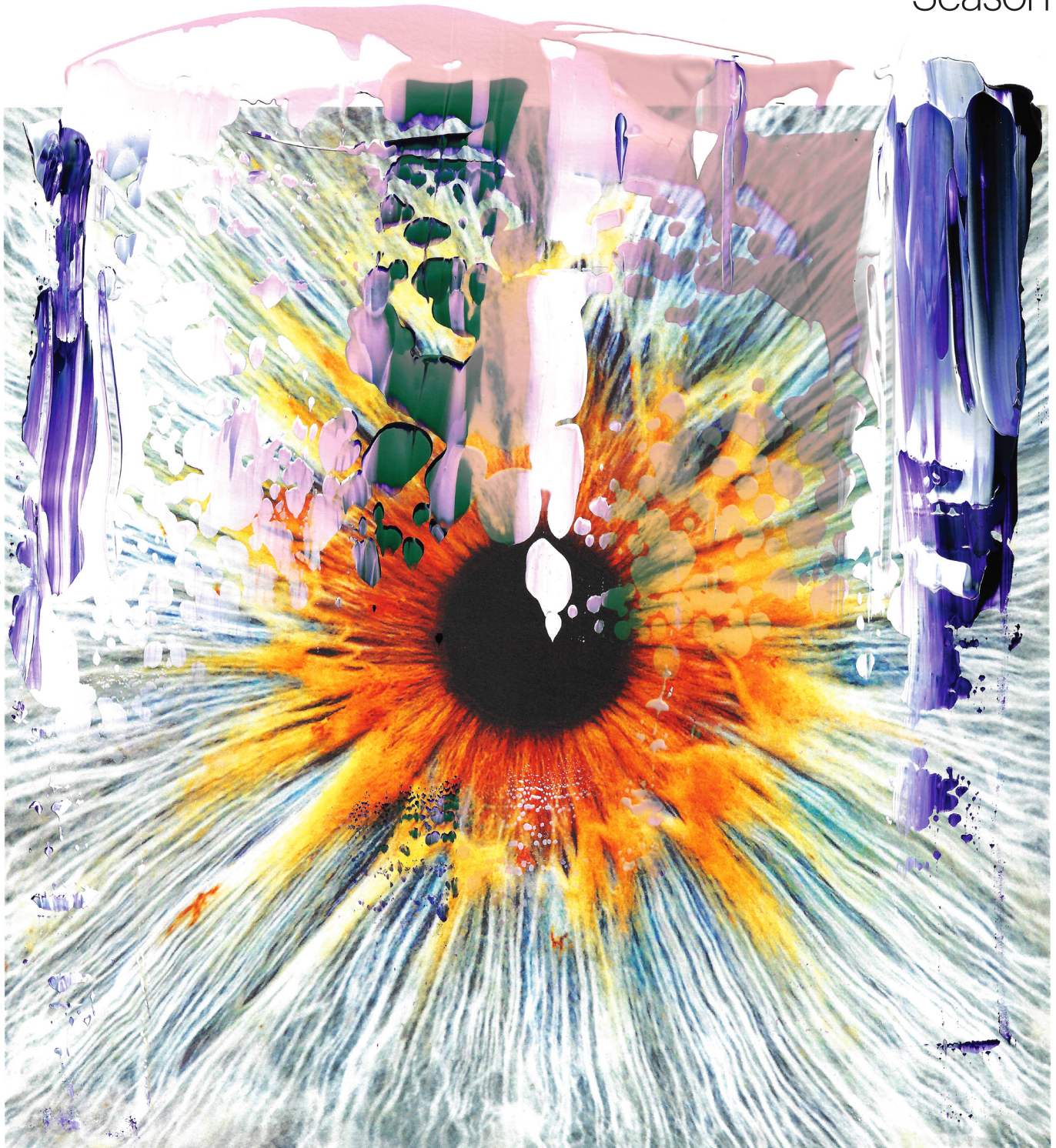


TAFELMUSIK



2021/22
Season



2022 Annual Report

Letter from Tafelmusik's Leadership



Photo by Dahlia Katz

The Voice of Vivaldi with Krisztina Szabó

The 2021/22 Season was a labour of love for all of us associated with Tafelmusik. Without the support of our donors, digital passholders, audience members, staff, musicians, and volunteers, the achievements outlined here could not have happened. Thank You.

Artistic Programming

After the tumultuous previous season, we were thrilled to return to live performances while once again offering a Digital Season of eight full-length concert films, as well as an array of other digital programs and initiatives. For the first time since March 2020, we welcomed international guest artists and musicians back to our stage. The reunion of audience and musicians was emotional and inspiring.

The 2021/22 season opened with *Music & Magic*, a digital production blending two mesmerizing art forms to create a world of illusion and enchantment. Conceived and programmed by Tafelmusik oboist and visual artist **Marco Cera**, who co-wrote the script with award-winning magician **Nicholas Wallace**, the film paired music by baroque composers with compelling magic vignettes. A performance by contortionist **Quinten Melo**



and stage direction by magician and digital media producer **Ryan Joyce** completed the picture.

In addition to *Music & Magic* and video recordings of three live concerts, we premiered four all-new digital concerts recorded at Jeanne Lamon Hall, Trinity-St. Paul's Centre: *Spotlight 15*; *The Voice of Vivaldi* with Canadian mezzo-soprano **Krisztina Szabó**; *Haydn & Friends*; and *Classical Revolution: Bologne & Mozart* with guest director and violinist **Leila Schayegh**.

In late November, almost 21 months after our last live public performance at Jeanne Lamon Hall, Tafelmusik made its long-awaited return to the stage with *A Tafelmusik Christmas*. Curated by Choir Director **Ivars Taurins**, the festive program reunited members of the choir and orchestra for the first time in 2021 and marked the launch of Tafelmusik Chamber Choir's 40th anniversary season.

In April 2022, we welcomed two sold-out performances at our home venue for a poignant

and unforgettable live tribute concert honouring Music Director Emerita **Jeanne Lamon C.M., O. Ont., D. Litt.**, who passed away in June 2021. This deeply personal musical homage was co-created by friend and colleague **Alison Mackay**, together with Jeanne's partner and former Tafelmusik principal cellist **Christina Mahler**, who returned to perform with the orchestra directed by **Julia Wedman**; actor **R.H. Thomson**; baritone **Brett Polegato**; and Tafelmusik Chamber Choir directed by **Ivars Taurins**. The award-winning Canadian filmmaker **Barbara Willis Sweete** directed the concert film version produced by White Pine Pictures, which was broadcast online in June 2022.

"I've often resisted the virtual concert, seeking something authentic, however this concert satisfies completely because of the emotions in play. It's not just another concert. Filmmaker Barbara Willis Sweete has accomplished something miraculous, the variety of camera angles feeling organic and unforced, the sound wonderfully alive." (*Barcza Blog*)



L TO R: Nicholas Wallace, Ryan Joyce, Brett Polegato, Leila Schayegh, R.H. Thomson



Photo by Dahlia Katz

Bach B-Minor Mass at Massey Hall with Masaaki Suzuki

A major milestone took place in early May when Tafelmusik Baroque Orchestra and Chamber Choir performed the first classical concert in the newly revitalized Massey Hall. World-renowned Bach specialist **Masaaki Suzuki** returned to direct a “finely honed and carefully balanced” (*Ludwig van Toronto*) performance of Bach’s B-Minor Mass, featuring guest soloists **Joanne Lunn**, soprano; **Tim Mead**, countertenor; **Thomas Hobbs**, tenor; and **Jonathon Adams**, baritone.

In accordance with revised public health measures, in spring 2022 we were pleased to add two live concerts devoted to the music of J. S. Bach. The orchestra returned to Koerner Hall, TELUS Centre in late May to revisit four of the six sparkling *Brandenburg Concertos*, and Tafelmusik Chamber Choir wrapped up its 40th anniversary season with *Bach Motets Return* at Eglinton St. George’s United Church.

A dynamic array of digital offerings complemented the digital season and live music experience throughout the 2021/22 Season. We presented three online *Tafel Talks*, featuring guest panelists and moderators from Toronto and beyond. These

lively panel discussions navigated a range of intriguing topics, including “Baroque Feast,” with panelists **Laura M. Carlson**, **Farzam Fallah**, and **Samantha Medeiros**, moderated by **Patrick G. Jordan**; “Music in the Key of Green,” with panelists **Abigail Richardson-Schulte**, **Kathleen Reilly**, and **Maryem Tollar**, moderated by **Katy Clark**; and “Remix Culture,” with panelists **Jennifer Jenkins**, **Mathieu Lussier**, and **SlowPitchSound**, moderated by **Cristina Zacharias**.

In keeping with our quest to explore baroque and beyond while contributing to community life, we launched a series of initiatives, including the final instalment of *Musik in Motion*, our free series of collaborative videos. Set to music from our 2019 recording of Antonio Vivaldi’s Concerto for bassoon in D Minor (Dominic Teresi, soloist), *Movement 1* featured choreography by **Hanna Kiel** and recent graduates from The School of Toronto Dance Theatre. The film premiered in September as part of Culture Days’ digital offerings.

Over the Family Day weekend, we premiered *The Gull*, *the Raccoon*, and *the Last Maple*, a powerful new digital concert for the whole family. This



L TO R: Abigail Richardson, Jordan Laffrenier, Amanda Cordner, Masaaki Suzuki, Alexis Diamond

contemporary fable about climate change was composed by **Abigail Richardson-Schulte**, with text and story by **Alexis Diamond**, narration by **Amanda Cordner**, and stage direction by **Jordan Laffrenier**.

Tafelmusik's Baroque Summer Institute (TBSI), our internationally renowned artist training program, was held virtually once again. In June we welcomed 47 participants and 32 auditors from across Canada, the US, England, Spain, Bolivia, China, and South Africa to a busy week of masterclasses, lectures, and workshops, presented live over the Zoom conferencing application.

A new issue of *Tafel magazine* for the musically curious was published earlier this year, featuring in-depth articles and interviews with conductor Masaaki Suzuki, violinist Leila Schayegh, and culinary historian **Annie Grey**. These offstage conversations are meant to enhance our community's understanding of the music that we are committed to exploring while inviting diverse perspectives.

Tafelmusik in the Community

Over the course of the season, Tafelmusik also collaborated with several organizations to bring the beauty of music of the past to local and national communities. Throughout the month of February, we were thrilled to partner with Michael Garron Hospital (MGH) and University Health Network (UHN). Four free digital concerts were offered to the physicians, learners, and staffs of MGH and UHN to show gratitude for the tremendous dedication of healthcare professionals during the global pandemic.

In March 2022, together with Concerts in Care Ontario, we embarked upon a national initiative that brought four free digital concerts to more than 1,000 seniors' facilities through a cross-Canada network consisting of Concerts in Care (Ontario), Health Arts Societies (Western Canada), and LaSAMS (Quebec).

Other community-focused activities included a chamber music concert for the Cultural Performing



Photo by Sian Richards

Allen Whear, Associate Principal Cellist,
Tafelmusik, 2000–2022.

Arts Series at Evergreen Brickworks; *All Creatures Great and Small*, a chamber music concert at the Columbus Centre presented by Villa Charities and North Wind; and a free performance and instrument petting zoo for Doors Open Toronto 2022, which welcomed more than 1,000 community members into Jeanne Lamont Hall and Trinity-St. Paul's Centre.

We were also delighted to offer performances beyond our immediate boundaries this spring, with live concerts at the Isabel Bader Centre for the Performing Arts in Kingston, the Montreal Baroque Festival, and Ottawa Chamberfest. A planned concert at the Toronto Music Garden at Harbourfront Centre was cancelled due to weather but quickly pivoted into a small garden presentation at the home of Jim Fleck to a small invited audience.

Musicians and Staff

We cannot summarize the 2021/22 Season without acknowledging the tragic loss of our dear friend and beloved colleague **Allen Whear**, Associate Principal Cellist. In recognition of Allen's 27 seasons with Tafelmusik, and his 22 years as a core musician, we dedicated our *Classical Revolution* concert film to his memory.

In late April, we shared the news that **Elisa Citterio** would not be returning to Tafelmusik for the 2022/23 Season. In her role as Music Director, Citterio's contribution to our organization has been profound. Under her inspiring leadership, Tafelmusik broadened its status as a global leader in period performance, exploring exceptional repertoire from the 17th through 19th centuries, commissioning new works, and promoting cross-cultural exchanges. She led an acclaimed new recording, *Vivaldi Con Amore*, as well as prestigious tours to Australia and Europe, the latter including a live studio performance at BBC Radio 3. Citterio worked intensively on high-quality digital



concerts to keep Tafelmusik connected with our audience in new ways. We are deeply grateful for her leadership as Music Director during her five-year tenure.

An Artistic Committee (AC) of three Artistic Co-Directors was recommended by the Orchestra and appointed by the Board in Spring 2022. The Artistic Committee assumed artistic leadership responsibilities, including season and tour planning, guest artist proposals, personnel management, audio/video oversight, and education/outreach. The AC works closely with senior management to provide guidance on artistic activities and consults regularly with the orchestra. The Artistic Co-Directors last season were Brandon Chui, Dominic Teresi, and Pippa Macmillan. Cristina Zacharias replaced Pippa at the end of the season. Dominic also served on the Artistic Committee in place between Jeanne Lamon's and Elisa's tenures.

After 27 years as a member of the soprano section, **Francine Labelle** departed Tafelmusik Chamber Choir at the end of the season. We will miss her terrific sense of humour and extend our thanks for her significant contribution to the choir over the years. We are also grateful to departing choir members **Katy Clark**, soprano, and **David Yung**, baritone, and are pleased to welcome sopranos **Jane Fingler** and **Teresa Mahon** and tenor **Sharang Sharma** to the choir for the 2022/23 season.

The newest member of Tafelmusik, violinist **Johanna Novom**, joins the orchestra as a core member as of September 2022. Johanna was Associate Concertmaster of Apollo's Fire, and has performed with many period ensembles, including Trinity Wall Street Choir and Baroque Orchestra, and Boston Early Music Festival Orchestra, among others.

In June 2022, the Board announced the departure of Executive Director **Carol Kehoe**. Kehoe came to Tafelmusik in 2018. Under her guidance, Tafelmusik navigated two years of pandemic planning,

delivering three successive surplus budgets despite challenging circumstances, all while maintaining staff and compensating artists. In response to the challenges posed by the global pandemic, Kehoe and her team, in collaboration with Elisa Citterio, the orchestra, and the choir and its director, Ivars Taurins, made the pivot to online concert films and digital content, paving the way for a robust digital future at Tafelmusik that engages audiences around the world in addition to its existing audience and patrons. Some of the digital initiatives included *Tafelmusik Together*, *Tafelmusik at Home*, *Tafel Talks*, *Tafel Magazine*, and *Music in Motion*.

She championed technology upgrades and compliance management for future operational efficiency at Tafelmusik, and oversaw the introduction of new brand positioning. Kehoe instigated various diversity initiatives and working groups, resulting in the organization's first ever diversity plan.

Daniela Nardi, a Tafelmusik board member from November 2018 to June 2022, was appointed Interim Executive Director. For over 25 years, Daniela Nardi has established herself not only as an award-winning musician but as a Producer and Arts Leader. She has had a special focus on Italian Canada. Her work includes being the Founder/Artistic Director of the successful multidisciplinary series called *Salone di Cultura*. Nardi served on the Board of Toronto's iconic Italian cultural centre, Villa Charities, and was later appointed Cultural Director of VCI's Columbus Centre. As a musician, Nardi has recorded and toured internationally, having performed at prestigious venues and festivals, including Koerner Hall in Toronto, Tchaikovsky Hall in Moscow, Montreal Jazz Festival, and Edinburgh Festival Fringe. She recently served as the Executive/Artistic Director of 918 Bathurst Centre for Culture, Arts, Media & Education.



Photo by Dahlia Katz

L TO R: Julia Wedman, Christopher Verrette & Geneviève Gilardeau, *A Tribute to Jeanne Lamon*

Board of Directors

The Board was pleased to introduce a rigorous process for identification of the Board Chair in anticipation of the 2022 Annual General Meeting. Tafelmusik has been privileged to have the guidance and exceptional insight of Chair **David Kilburn**, who volunteered nine years on the Board. David oversaw the organization through the introduction of a new music director after the storied legacy of Jeanne Lamon. He worked with two executive leaders who saw artistic programming and community outreach branch out beyond baroque to introduce *Haus Musik* and *Musik in Motion*. Kilburn tirelessly and sensitively worked to keep Tafelmusik steady during a worldwide health crisis. His commitment to this world-renowned ensemble is incomparable, and his contribution celebrated.

In light of leadership transition, working groups were established to assess and reflect on future

board, artistic, and administrative leader roles, as it prepares for leadership searches. Regular monthly Board meetings continued virtually, each time assessing the next steps in prudent financial and business management, and in compliance with government regulations to keep our musicians and staff safe and healthy.

Success at Tafelmusik is only achieved with the generosity of many friends. We are humbled by the continued support of our members, donors, and corporate partners.

We were especially grateful for special gifts this season made in memory of **Jeanne Lamon**. With the support of the Hal Jackman Foundation, the Fleck Family Foundation (Jim Fleck), Tom MacMillan, Ann Monoyios and Glenn Hodgins, and Jane and Al Forest we were able to provide a fitting concert and film tribute to our late music director. In addition, upwards of \$88,000 was raised through individual gifts, all of which was



endowed in Tafelmusik's Jeanne Lamon Futures Fund at the Ontario Arts Foundation. These funds will be matched by the Department of Canadian Heritage in late 2022. We are grateful to former managing director Tricia Baldwin and former development officer Matthew Airhart for leading this campaign.

We were delighted to welcome BMO as Season Presenting Sponsor. BMO's sponsorship programs provide significant funding for organizations that enrich community life, and we are grateful for their support. As well, numerous foundations provided critical generous contributions during this time, all of which are listed in the donors section of this report.

We must acknowledge the tremendous support of federal government initiatives that maintained arts organizations, including the Canadian Emergency Wage Subsidy and the Canadian Emergency Rent Subsidy, as well as funding from Canadian Heritage. The Ontario government was equally instrumental to our financial bottom

line with special business loans and incentives, and grants via the Ontario Arts Council and the Ontario Trillium Foundation, from which Tafelmusik benefitted. The Toronto Arts Foundation was also able to provide special gifts from the Hal Jackman Foundation, directed specifically to Tafelmusik. The Board is grateful for the support of our donor community and sponsors. As a result, we were able to ensure a modest surplus this year. This surplus will be applied to our future seasons as we continue to work towards a full slate of programming.

In the past year, the Board completed and approved governing documents related to health and safety, diversity and inclusion, as well as monitored further technology investment in Tafelmusik's financial and IT processes. We continue to evaluate and measure our governance practices and are grateful for the commitment and engagement of our individual board members. We offer our appreciation and gratitude to the musicians of the Tafelmusik Orchestra and Choir, as well as the administration team. ♦



David Kilburn | Chair

Daniela Nardi | Interim Executive Director

Brandon Chui | Artistic Committee

Dominic Teresi | Artistic Committee

Cristina Zacharias | Artistic Committee

Thank You to Our Generous 2021/22 Donors



Tafelmusik is deeply grateful to all of our donors who continue to support our mission to celebrate beauty through music of the past. From the smallest gift to the largest, your support has inspired and strengthened us to continue to share the joy of baroque music with our community, both here at home and abroad. Thank you for believing in Tafelmusik and in the power and beauty of music.

The following lists recognize donors' total giving from the 2021/22 season (July 1, 2021 to June 30, 2022)

MUSIC DIRECTOR'S CIRCLE (\$5,000+)

Anonymous
Kate Applin
Stephanie Applin
Tricia Baldwin
Tom Bogart & Kathy Tamaki
Tom Box
Binnie Brennan
Fernando Martinez-Caro
& Marietta Urbajtel
Margaret Catto
Michael Disney
Jim Fleck
Al & Jane Forest
Morten & Janice Friis
John & Judith Grant
Lynn & James Haight
Ludwig W. Kalchhauser
David Kilburn & Tamara Peres
Valarie Koziol
Marion Lane
Alison Mackay
Tom MacMillan
Trina McQueen
Ann Monoyios &
Glenn Hodgins
Alec & Joyce Monro
Elise Orenstein
Christopher & Colleen Paige
Bojan Pavlovic
Brayton Polka
Joan E. Robinson
The Whitmer Trudel
Charitable Foundation
Ron Schlumpf & Marie Venner
Gary & Christine Vernon
Jane T. Witherspoon

CONTINUO CIRCLE (\$1,500-\$4,999)

Anonymous (4)
Margaret Ackerman
Matthew & Phyllis Airhart

Monica R. Armour
Virginia Atkin & Keith
Ambachtsheer
Richard J. Balfour
W. Donald Bean
Harvey Beresford & Jane Knox
Betty Binon
Helen G. & Harry Bowler
Doug & Mary Lou Brock
Barbara & John Burbidge
Donald Cooper
Jayne & Ted Dawson
Reinhard & Marlene Dotzlaw
Waltraud Erler
Elinor Fillion
Richard Fischer
John & Laura Formusa
Alice Fox
Diane & Dick Freeborough
Sharon & Ken Giffen
Scott & Ellen Hand
Richard & Ellen Hoffmann
Dorothea Hudec
Jill Humphries
Michael & Judith John
George Thomas Kapelos
& Martin MacLachlan
Alison M. Keith
Andy Kenins & Heather Kaine
Carol Kirsh
James A. Lackie
Les & Sandra Lawrence
James Leising
Barbara & Dougal Macdonald
Eva MacDonald &
David Robertson
Susan Baumann &
Murray Marchant
W. Matheson
Mundy McLaughlin
Ursula Menzel
Anne Moir
Carol Moore
Nancy & Larry Murray

Drs. M. L. Myers &
W. P. Hayman
Lorna Niebergall
Ed & Karen Nowak
Cindy & Ed Nowina
Patricia O'Malley & Ronald Hikel
Dr. Helen Ostovich
Augusto Patmore &
Beatriz Canedo
John & Maire Percy
Noah Richler
Dorothy Ross
Nick Rundall
Valerie Schweitzer &
Chris Reed
Don Short & Heather Sampson
Robert Simpson
Philip Somerville
Ann & David Taylor
John Tidswell
Andrea Walker &
Lawrence Crawford
Virginia & Rick Walker
John & June Wevers
Alan Wheable
Dianne Azzarello &
Stephen Wilton
Alison Harvison Young &
H. J. Wilton-Siegel
David B. & Virginia A. Wortman
Lei Xu
Margaret Yamanaka
Morden Yolles
Joyce & Fred Zemans

FRIENDS (\$120-\$1,499)

Anonymous (37)
Arlette Adam
Geoffrey Ainsworth
Carolyn & Andrew Alberti
Albert & Nancy Alexanian
Mary Ames
Erik Andersen
Philip Anisman

Susy Antal
Tetyana Antimirova &
Jean-Luc Pelissier
Susan Arbuckle
Richard Archbold
Marian Archbold
Ken Armson
B.J. Armstrong
Colin Arnold
Margaret & Stephen Arnold
James & Penny Arthur
Yveline Audemars &
Humberto Rivero
Marlene Auspitz
Lezlie Bain
Mary Baldwin
Marjorie Ball
Carolyn Barber
Michael & Janet Barnard
Anne Barron
Alain Bartleman
Peter & Leslie Barton
Norma Bassett
Alice & Tom Bastedo
William Bateman
Carolyn Beatty
Clive Beck
John Beckwith
Eva Bednarowicz
Pierre Beeckmans
Lynne Beisswenger
Dawn Bell
Lucille Bell
Rosalind Bell &
Dory Vanderhoof
Pradeep Benjamin
Gyuszi Berki
Joan B. Berry
Markus Biehl
Helen & Alan Billing
Anne Biringer
James & Brenda Bisiker
Sara Blake
Howard Block

Ian & Janet Blue	Amy Colson	Valerie Fines	Rhoda & Paul Hill
J. Douglas Bodley	Ruth Comfort	Carl Finkle	Robert & Jean Hilliard
Desmond Bohn	Nancy Conn	Jim Fitton	Diana Hilton
Kalman Bohus	Lloy Cook	Anne Fleming	Peg Hiscoke
Susan Boon	Susanne Copp	Phyllis Fleming	Peter & Verity Hobbs
Maureen Boulton	Murray & Katherine Corlett	Tom Flemming	John Hodgkinson
Walter M. & Lisa Balfour Bowen	Brian & Linda Corman	Michael Flint	J. A. Hogan
Elsbeth Bowler	Gloria Cornell	Traudl Flock	Ann & Peter Jervis
Jean Bowman	Maria H. Corral	Marianna Forteath	Rosalind Holeton
M. E. Bradshaw	J. Côté	Judith L. McCormick	Barb & Lee Horigan
Lola Bratty	Jane Couchman & Bill Found	Valerie Francis	Susan & Richard Horner
Dr. Ruth Bray	Jim Coward	Jane Freeman	Naomi & Sandy Horodezky
Susan Bray	B & P Craig	Louise Freyburger	Iris Horton
Susan Bright & Peter Rowlands	Murray Craik	Anne Friedl	Anna Howes
Susan & John Britton	Anne Elizabeth Crowley	Judith Frise	Caroline Howes
Patricia & Paul Brochu	Joan Cullemore & Olaf Trunzer	Don Galbraith	Elizabeth & Peter Howes
Jeffrey Brown	Kate Cullen	David Gale	David Hughes
Barbara Brunsden	Albert E. Cummings	Anne Galilee	Anne Hume & Kim Hume
Richard Bull & Bryan Pipe	Lynda Curnoe	Robert Gatfield	Lindsay Hunt
Allan & Lucy Burston	John Dadosky	MaryAnn Gauthier	Charles Lindsay and Susan
Michele Bussieres	Ann Dadson	Isabelle Gibb	Hunt Charitable Fund
Roswita Busskamp	R. Kenneth S. Davies	Jacqueline Gibbons	Wendy Hunt
Vera Callaghan	Alan & Marilyn Davies	Elaine Givertz	Mel & Wendy Hurst
Alicia Campbell	Barry Davis	Joan Gladwell	Christopher & Margaret Ibey
Jackie & Allan Campbell	David Dawson	Karen Golden	Alex Ihnatowycz
Livi Campbell	Hilary Dawson	Julie Goldstein	Bruce Inglis
Marie Campbell	Michael & Honor dePencier	Marla Goldstone	Adrian Ishak
D. d'Astous & F. Champion	Annette DeBoer	William Goodfellow	J. T. Ison
Joseph Carens	Ian Dejardin	Nicolaas Gootjes	Robert L. Iveson
Ellen & Brian Carr	Leslie & George Denier	Michael Gosal	Barbara Jackel
John Carter &	David Derry	Peter Gould	John I. Jackson
Antoinette Tumillo	Gwen Deshima	Cheryl Lynn Grady &	Susanna Jacob
Alice Casselman	Janet Dewan	Stephen Strother	Vida Jan
Barbara Casson	John & Lorna Dick	Sheila Graham	Alvin Jantzi
Charles Caty	Lynne DiStefano	Jane & John Grant	Frances Jerry
Olga Celliers	Neil & Susan Dobbs	Doreen Gryfe	Mary Jessup
Francine Chabot-Plante	Susan Done & Sean Mace	Chester & Camilla Gryski	Winfred Jhu
Guy Chadsey	Gini Donker	Catalina Klein	Jacqueline Jimenez
Simon Chamberlain	Carol Dorman	Annette & Heinz Gutsch	Elisabeth Jocz
Donald & Shirley Champ	Bob & Lynn Douglas	Barbara Habib	Bruce Johansson
Ophelia Chan	Suzanne Dubeau	Darlene M. Hall	Christopher Johnson
Jonathan Cheng	Anne J. Dyck	Ethan Beyer	Quentin & Susan Johnson
Barrie Chercover	Doris Earl	David Hamer	Susan Johnston
Deborah Cherry	Richard & Sally Earls	Laura Hamilton	Rayna Jolley
Leigh Chestnut Halls	Barry Edwards	Margaret Hamilton	Pamela Jones
Ann Christie	Art Eggleton &	Ken & Patricia Hanson	Sylvia Jones
Vince Ciavaglia	Camille Bacchus	Diana M. Hardacre	Derek Jordan
Dana Clarence	Brenda Ellenwood	Birgit Harley	Patrick G. Jordan
John & Heather Clark	Donald Elrick	Elizabeth & Milton Harmelink	John Kalisz, in memory
Peter & Catherine Clark	Edith Endrenyi	Marjorie Harris	of Frances Kalisz
Brian Clarke	Patricia & John Evans	Klaus & Caron Hartmann	Marlene Kane
Hon. Adrienne Clarkson	Mary Lou Fallis-Madgett	Jane Hastings	Bill, John, Ann & Anna Karner
Janet Cleghorn	Diane Fayerman Watson	Linda Hellas	Fred & Vancy Kasper
Pamela Cline	James & Cathy Feenstra	Brian & Cathy Hellyer	Giuliana Katz
Ian & Elizabeth Clunie	W. M. Feenstra	Dr. Marianne Henn	Shirley Katz
Thomas Clute	Christopher Ferguson	Nandy Heule	Paul Kay & Temma Gentles
Patricia & Douglas Coate	Bruce M. P. Ferreira-Wells	Avril N. Hill	Pavle Kazinoti
Thomas V. & Elizabeth S. Cohen	S. Feser	Lorraine Hill	Jude Keast

Dixie Kee	Judith Lowther	Elizabeth Nicholson	Sharon Russell
Andrew Keesing	Judith Luginbuhl	Ron & Sharon Nickle	Deborah Sabadash
Carol Kehoe	Anthony Lysak	Kirsti Nilsen	Fred & Brenda Saunders
Thomas Keirstead	Marion & Brian MacDonald	Michele Noble	Beverly & Fred Schaeffer
Anthony & Patricia Keith	Mary MacKay MacMillan	Jim & Sheila Northover	Murray Schecter
Margaret Kelch	Margaret Mackay	Lorna Novosel	Deirdre Schell
David Kennedy	Duncan MacKenzie	Michael Oakes	Erika Schengili
Sheryl Kennedy	Marion E. Magee	Selma & Herbert Odom	Bruce & Marilyn Schneider
Tammy Kennedy	Christina Mahler	Harald Ohlendorf	Ruth Mesbur &
William and Kieser	Peter K. Mak	Kenneth O'Neill	Harlan Schonfeld
Stephen Kilburn	Susan Malcolm	Susan W. Osler	Cornelia Schuh
Wendy King	Pauline Malley	Andrea Ott	Suzanne Schuh
Marion Kirkwood	Theresa Mannion	Robert Page	Ellen Schwartzel
John Klassen	Peter Manson	Alison Parker	Klaus & Magdalene Schwartzel
Carolyn Knott	Juleen Marchant	Frances & Zigmund Parkin	Douglas R. Scott
Dr. Elizabeth Kocmur	Jim & Jane Marlatt	Ann Patterson	Linda Seppanen
Nicholas Kohler	Ellen McCall	David & Mary Ann Pearson	Carol & Wayne Shaw
Hedy Kousen	Neil McCallum	Ian Peebles	Lillian Shery
Ildiko Kovacs	Ingrid McCartney	Catherine & Bruce Peer	Elaine Sidhu
Bill Kummer, in memory of Judy Dalrymple	Susan McCawley & Dennis Hewitt	Jan Pel	Jane F. Sigen
Claire LaVigna	David McCrady	Michael Penny	Kathleen Simo
Colin Lambert	Karen McKenzie	Carol Percy	Judy Simon
Roseline Lambert	Stephen McKenzie	Michael Perkins	Judy Skinner & Donald Altman
Marilyn Lamson	Catharine Lynn McKnight	Joan & Martin Peskin	Anne Skoczylas
Kathleen Lang & Andrew Hackett	Carol McLennan	Stephen Phillips	Janice & Tim Slade
Arnold Lang	Dr. Elizabeth McLeod	Mary Pickford	Christine Sloss
Walter Langille & Janice Spencer	Maureen McReavy	Nick Plavac	Mary Smith
Ellen Larsen, in memory of Lynn Jeffrey	Robin Medcalfe	Jean Podolsky	Margaret Smuk
Karen Laurence	Rosemary Meier	Stan Podwin	Anna Soininen
Ken & Kathy Lawday	Jeffrey Mendelsohn	A. Marion Pope	Norman & Ann Soley
Annette Lawrence	Ulrich Menzefricke	Wyley Powell	Maureen & Joe Solomon
Sean Lawrence & Esther Shipman	Stephanie Meredith	Anne Power	Warren Sorensen, in memory of Gregory Williams
Anne Lazenby	Donald Merriell	Emily Powers	Bette Sparago
Bruce LaZerte	Kate Merriman	Nicole Presentey	C. E. & M. J. Spearin
Eugene LeBlanc	Marcellina Mian	Georgia Quartaro	Harvey D. St. Amant
Susan Lederman & Leslie Monkman	Bill Mighton	Elaine & Dr. Mark Quigley	Michael Stainton
Lynn Ledgerwood	Margaret G. Miller	Sonya Rabeneck	Brian Steele
Jack Lee	Sean Miller	Isobel Raven	Erika Steffer
Derek Leebosh	Peter Milovanovic	Mary E. Ray	Elaine & Joseph Steiner
J C Leith	Glenda Milrod	William Redelmeier	Paul & Lynne Stott
Steven LeMay	Juliet Milsome	Carol-Lynn & Conrad Reifel	Janet Stovel
Kathy Levine	Deanna Mircheff	Leslie T. Reissner	Andrei Streliaev
Leanne Lewis	Susan Mohring	Edward Richards	Olga Streltchenko
Eve Leyerle & Hubert Lum	Anne Montgomery	Tim Richardson	J. T. Strong
Alison Li	Margaret & Reid Morden	Judi Richter-Jacobs	Wayne Stump
Yuqi Li	Esteve Morera	Katherine Ridout	Richard Sumner
Greg Lichti	Gillian Morrison	Sharron Robarts	Paul & Jane Swarney
Mary Lieberman	Mary Jane Mossman & Brian Bucknall	Jason Roberts	Gary Sweet
Janet Lin	Andrea Most	Kathryn Robinson	Stephanie Swift
Anthony Lisanti	Ann Mummenhoff	Michael Robinson	Klara Szabo
Barbara Lloyd	Ann Mummenhoff	Brenda Rolfe	Ana & Bernardo Sztabinski
Ottie Lockey & Eve Zaremba	Steve Munro	Anne & David Rosevear	Margaret Szucs
Gillian & Oliver Long	Dr. Peter B. Munsche	Ian & Pam Rosmarin	James & Barbara Tangney
	Edmund & Mary Murphy	Carolyn & Paul Roth	Ian M. Taylor
	Shirley Murray	Miriam & Robert Rottapel	Margot Taylor
	Susan Musselman	Maria Rozemond	Anthony ten Kortenaar
	Tristan Neill	Dorothy Rubinoff	Martha Ter Kuile
	Lynda Newmarch	Janet & Arthur Rubinoff	Albert L. Terpstra
		Dorothy Russel	

Nancy Thoman	V. Marilyn Turner	Margaret Watson	Derryk & Diane Wolven
David Thomas	Mary J. Turner	Susan Watt	Angie Wong
Peter S. Thompson	Kaspars Tuters	Grant Wedge	Bing Wong
Susan J. Thompson & Catherine Drew	Patricia & Alasdair Urquhart	Barbara Wendland	Lilly Wong
Leslie Thomson	Michelle Valliere	Christopher Wernham	Perry Wong
Stuart Thursby	Frank & Adele Vandersteen	Laurie White	Ann Woodland
John Thurston	Eugenia Venchiarutti	Raymond Whitehead	Jeffrey Wyndowe & Gitta Tafler
Robert Timm	Rudolph Vezer	Hugh & Marilyn Whiteley	Karen Wynnychuk
Allan Titus	Rosemary Vezina	Scott Whittington	Meg & Jim Young
George & Despina Tourlakis	Carol Vine	Gloria Wiebe	Arthur Yung
Roger & Joyce Touw	Catherine Vivian	Jim Wigmore & Penelope Connor	Cristina Zacharias & Ed Reifel
Roger Townshend	Vito & Patricia Volterra	Mary F. Williamson	Jane Zeidler
Penny Tracy	Helene Wagner	Deborah Wills	Adrian & Janet Zenwirt
Rosy Tretjakewitsch	Susan Wahlroth	Joan Wilson	Don Ziemann
Michael Treuman	Barry Walker	Joan Winearls	Judith Zoltai
Luisa Trisi	Katie Walmsley	Irene Withers	
Michaela Tudor	John Walsh	Walter Wodchis	
Elsbeth Tupker	Pauline Walsh	Menachem & Elana Wolff	
	Marion Warburton		

We want to acknowledge each and every donor who has made a contribution—of any amount—to support Tafelmusik’s concerts, outreach activities, and artist training programs this season. Your generosity makes it possible for us to explore baroque and beyond together. **Thank you.**

TICKET DONATIONS

We have entered a new landscape for live concert performance, and we would like to thank all our patrons who chose to donate the value of their tickets back to us when unable to attend. Your generosity is greatly appreciated.

TRIBUTE GIFTS

We thank all those who chose to honour a loved one in the 2021/22 season by making a gift to Tafelmusik. We are humbled to hold such a meaningful place in the lives of our donors, patrons, and wider community.

Anonymous, in honour of Jeanne Lamon
 Andrew Keesing
 Carol Kehoe, in honour of James William Anderson
 Metcalf Foundation, in honour of Taya Rosenberg
 Kathleen Pearson, in honour of Jeanne Lamon
 Ian Peebles, in memory of Jeanne Lamon
 Anne Power
 Erika Schengili-Roberts, in honour of Jean Strimling
 Stuart Thursby, to the Tafelmusik and Stack Creative teams
 working together on the new site!
 Margaret Watson, in honour of Phyllis and Bill Nediger
 Suzan Weidt, in honour of Jeanne Lamon

JEANNE LAMON INSTRUMENT BANK

The Jeanne Lamon Instrument Bank enables us to acquire and maintain a collection of period instruments for use by our musicians and young baroque artists in training. We are grateful to our 2021/22 donors for their generous support.

Anonymous (2)
 Binnie Brennan
 Erica Cooke
 Michael Disney
 Adrian Ishak
 Robert L. Iveson
 Ottie Lockey & Eve Zarembo
 Frances MacCusworth
 Peter & Ursula Menzel
 Mary Jane Mossman & Brian Bucknall
 Michael Oakes
 Joanne Sleightholm
 Bette Sparago
 Catherine & Gary Vivian



JEANNE LAMON FUTURES FUND

To recognize Jeanne's long legacy with Tafelmusik, a new permanent endowment fund was created to provide sustainable funding to strengthen and expand Tafelmusik's artistic future. Thank you to the following donors who contributed to start this fund.

Anonymous (2)
Matthew & Phyllis Airhart
Ann Archer
Monica R. Armour
Virginia Atkin & Keith Ambachtsheer
Tricia Baldwin
John & Heather Clark
Elinor Fillion
Al & Jane Forest
Sharon & Ken Giffen

Lynn & James Haight
Dorothea Hudec
David Kilburn & Tamara Peres
Ottie Lockey & Eve Zaremba
Susan Baumann & Murray Marchant
Trina McQueen
L.M. Niebergall
Augusto Patmore & Beatriz Canedo
John & Maire Percy
Dorothy Ross

Dorothy Rubinoff
Don Short & Heather Sampson
Sheila Smolkin
Andrea Walker & Lawrence Crawford
Christopher Wernham
Alan & Abby Wheable
Joy Williams
Jane T. Witherspoon
Joyce & Fred Zemans

TAFELMUSIK LEGACY SOCIETY

The Tafelmusik Legacy Society is a group of caring donors who have kindly made a planned gift to Tafelmusik in their will or another vehicle in their estate plan. These donations ensure that future generations are able to enjoy the same joyful musical experiences that are so meaningful to you, our audience members.

Anonymous (3)
Matthew & Phyllis Airhart
Viv Alper
Tricia Baldwin
Carolyn Beatty
Lucille Bell
Harvey Beresford & Jane Knox
Marnie Bracht
Nancy Conn
Suzanne Dubeau
W. M. Feenstra
Elinor Fillion
Robert Gatfield
Sharon & Ken Giffen

Jennifer M. Grassby
Peter & Verity Hobbs
Moiria Hudgin
Susanna Jacob
Elisabeth Jocz
Rayna Jolley
Hiroko Keith
Carol Kirsh
Ania & Walter Kordiuk
David & Susan Linds
Lorna Niebergall
Wayne Drewry & Susanne Palmer
Audrey & Colin Randall-Smith
Isobel Raven

Nick Rundall
Dorothy Russel
Deborah Sabadash
Bob Tilton
Ihor Tomkiw
Mary J. Turner
Dr. Martin F. Walmsley
John & June Wevers

ESTATE GIFTS

Charles David Kaula
Eva Saphir
Carolyn Thompson

Every effort has been made to ensure accuracy. We apologize for any errors and request you report any changes to info@tafelmusik.org

2021/22 Partners



Tafelmusik thanks our partners who share our commitment to artist training, education, and community engagement

2021/22 Season Presenting Sponsor



Jeanne Lamon Tribute Concert Benefactors

Jim Fleck
Tom MacMillan
Ann Monoyios &
Glenn Hodgins

Musicians' Patrons

Al & Jane Forest

Guest Artist Sponsor— Masaaki Suzuki



Tafel Talks Baroque Feast Sponsor



2021/22 Media Partner



Government Supporters



Canada Council
for the Arts

Conseil des arts
du Canada



ONTARIO ARTS COUNCIL
CONSEIL DES ARTS DE L'ONTARIO
an Ontario government agency
un organisme du gouvernement de l'Ontario



FUNDED BY
THE CITY OF
TORONTO



Ontario
Trillium
Foundation



Fondation
Trillium
de l'Ontario

An agency of the Government of Ontario
Un organisme du gouvernement de l'Ontario

Foundation & Corporate Supporters

Balfour Bowen Family Foundation
Bears For The Planet Foundation
Bialkowski Foundation
Canada Helps Org.
Covell and Edwina Foundation
Fleck Family Foundation
Gatfield & Campbell Arts Foundation
The George Wyhowszky Charitable Foundation
Hal Jackman Foundation
Horst Dantz and Don Quick Fund
Jeanne Lamon & Christina Mahler Fund
Keith Foundation

The McLean Foundation
Melos Music Society
Metcalf Foundation
MZ Media Inc.
The Rogan Foundation
Salesforce Inc.
Shirley Murray and Associates Consulting
Toronto Foundation
Toronto Arts Foundation
United Way Kingston, Frontenac, Lennox & Addington
United Way of Greater Toronto
Whitmer Trudel Charitable Foundation

Financial Report



REVENUES		\$
Concerts—Toronto	521,079	
Operating and project grants	1,708,841	
Touring	0	
Fundraising	1,127,571	
Recording and broadcasting	22,880	
Investment income	319,689	
Amortization of deferred capital contributions	234,083	
Government subsidies	207,119	
Education	25,826	
Sold Services	99,149	
TOTAL EARNED REVENUE	\$4,266,237	
EXPENSES		\$
Artistic fees—Toronto	1,257,420	
Concert productions	541,114	
Production and technical fees	181,735	
Marketing	763,858	
Administrative expenses	789,087	
Touring	15,245	
Fundraising	145,381	
Contribution to Ontario Arts Foundation	88,155	
Education and outreach activities	59,794	
Recording expenses	51,211	
Amortization	249,137	
TOTAL EXPENSES	\$4,142,137	
EXCESS OF REVENUES OVER EXPENSES BEFORE DISTRIBUTION	\$124,100	

Audited Statements are available by request by contacting info@tafelmusik.org

Board of Directors & Committees



Board of Directors

David Kilburn
Dianne Azzarello
Alain Bartleman
Bevan Brooksbank
Peter Carver
Andrew Forde
Diana Mackay
Fernando Martinez-Caro
Shirley Murray
Daniela Nardi
Nirvan Nuckchedee
Elise Orenstein
Christopher Paige
Ron Schlumpf
Victor Tung

Ex Officio

Carol Kehoe, EXECUTIVE DIRECTOR
Brandon Chui, ARTISTIC COMMITTEE
Dominic Teresi, ARTISTIC COMMITTEE
Cristina Zacharias, ARTISTIC COMMITTEE

Executive Committee

David Kilburn, CHAIR
Ron Schlumpf, VICE CHAIR AND SECRETARY
Elise Orenstein, TREASURER
Christopher Paige, AT LARGE

Finance Committee

Elise Orenstein, CHAIR
John Abberger, MUSICIAN
Merwyn Rosario
Andrew Forde

Governance Committee

Ron Schlumpf, CHAIR
Bevan Brookshank
Shirley Murray
Victor Tung

Governors Council

Peter Carver, CHAIR
Fernando Martinez-Caro
Ron Schlumpf
Shirley Murray
Beth Anderson, STAFF

Board Liaison to Diversity Working Group

Daniela Nardi



2021/22 Tafelmusik Volunteers

Tom Bilenkey
Tom Box
Ree Chen
Priscilla Chong
Michèle Croteau
Michael Dales
Kimberly Eid
Diana Fancher
Bob Fugere
Sandra Gopaul
Angela Herwin
Naomi Hunter
Audrey Johnson
Dorothy Khorshed
Kamala-Jean Kopjie
Guy Legault
Will Lytwyn

Lynda Moon
Theresa Moran
Lorna Neibergall
Kenna Owoh
Kathy Patterson
Michael Perkins
Amyris Rada
Pooja Rawal
Clive Richards
Sharron Robarts
Semra Salkok
Rita Schwerdt
Suzanne Self
Doug Snyder
Ione Williams
David Yellowlees
Vivien Yellowlees

Photo by Daniel Banko



Photo by Cylla von Tiedemann





Tafelmusik Baroque Orchestra & Chamber Choir

Elisa Citterio, MUSIC DIRECTOR (to Spring 2022)

Brandon Chui, Dominic Teresi, and Cristina Zacharias, ARTISTIC COMMITTEE (from Spring 2022)

Ivars Taurins, DIRECTOR, TAFELMUSIK CHAMBER CHOIR

Jeanne Lamon, C.M., O.O.N.T., MUSIC DIRECTOR EMERITA (to June 2021)

Kenneth Solway and Susan Graves, FOUNDERS

Tafelmusik Baroque Orchestra

Violin

Patricia Ahern
Geneviève Gilardeau
Christopher Verrette
Julia Wedman
Cristina Zacharias

Viola

Brandon Chui
Patrick G. Jordan

Cello

Keiran Campbell
Allen Whear †

Bass

Pippa Macmillan

Oboe

John Abberger
Marco Cera

Bassoon

Dominic Teresi

Harpichord/Organ

Charlotte Nediger

† d. 2022

Tafelmusik Chamber Choir

Soprano

Katy Clark
Francine Labelle
Roseline Lambert
Carrie Loring
Meghan Moore
Susan Suchard
Sinéad White

Alto

Kate Helsen
Simon Honeyman
Valeria Kondrashov
Peter Mahon
Jessica Wright

Tenor

Paul Jeffrey
Will Johnson
Robert Kinar
Cory Knight
Kevin Myers

Bass

Alexander Bowie
Parker Clements
Nicholas Higgs
Alan Macdonald
David Yung

Staff

Executive Director

Carol Kehoe (to June 2022)

ARTISTIC ADMINISTRATION & OPERATIONS

**Director of Artistic
Administration & Operations**
Beth Anderson

Production Manager
Su Kim

Production Manager
David Costello (to August 2021)

**Artist Services &
Operations Coordinator**
Kaitlin Saito (Maternity Leave)

Program Editor & Librarian
Charlotte Nediger

Assistant Librarian
Cristina Zacharias (to June 2022)

Label Manager, Tafelmusik Media
Mike Pelletier (to June 2022)

Assistant Concert Managers

Cayla Bekk
Maya Bowers
Karli Feldman
Matthew MacInnis
Ainsley Naylor

Video and Audio Production

Matthew Antal
Tyson Burger
Glenn Davidson
OutWest Design
Michael Distefano
Marc Fortunato
Fast Hat Films
Jill Harris
Raha Javanfar
Mark Klassen
Chris Lamont
Jason LaPrade
Marco Libretti
Michelle Ou
Julian Peter
White Pine Pictures
Fox Procenko
Thomas Upjohn
Thomas Varey

MARKETING & DEVELOPMENT

Director, Strategic Partnerships
Sarah Baumann (to June 2022)

**Associate Director,
Sales And Engagement**
Devon Klaas (to June 2022)

Digital Marketing Manager
Lana Leprich

Marketing Coordinator
Andrew Eusebio (to May 2022)

Development Manager
Annie Slade

Marketing Intern
Becky Tanton

AUDIENCE SERVICES

**Associate Director,
Audience Services**
Giulia Mandel

Audience Services Manager
Martin Reis

**Audience and Donor
Relations Manager**
Necole James (to March 2022)

Audience Services Coordinator
Adrienne Scott (to June 2022)

Audience Services Coordinator

Kevin Kashani

Front of House Manager
Ian McNulty

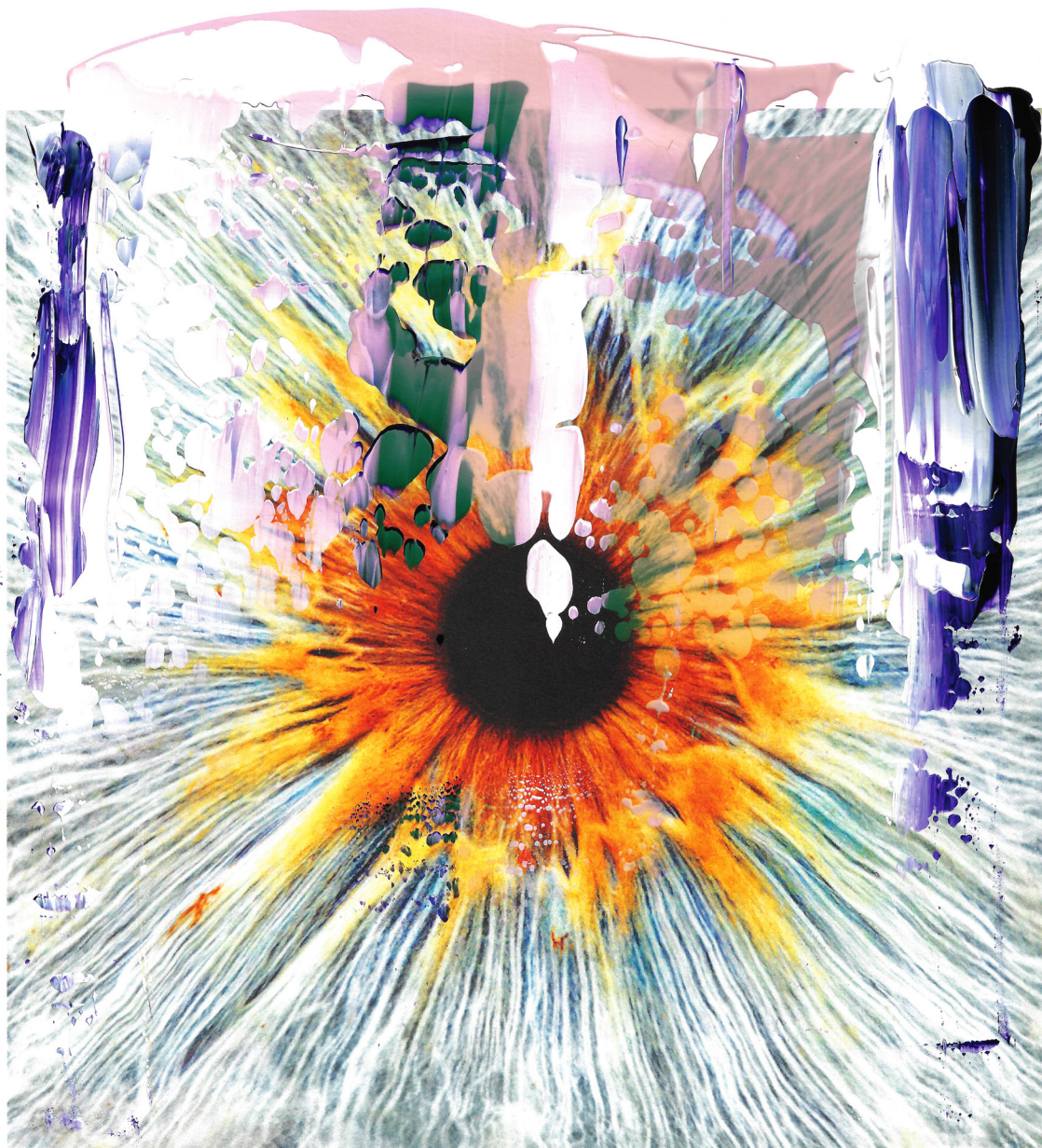
Ushers
Riel Aarons
James Bell
Corey Brown
Greg Campbell
Sherri Gault
Ian Goudge
Ron Koperdraad
Laura Kyswaty
Cameron Mackay
Andrew Siemens
Catherine Thompson
Aws Waham
Margo Walton

PRESS & EDITORIAL

**Editorial and Media
Relations Manager**
Luisa Trisi, Big Picture
Communications

FINANCE

Bookkeeper
Rob Brill, Young Associates



SEASON IMAGERY: Puncture Design / REPORT DESIGN: Weststrong Group Inc.

427 Bloor Street West, Box 14
Toronto, Ontario M5S 1X7 Canada
Box Office: 1 (833) 964-6337 | (416) 964 6337
tafelmusik.org

Charitable Organization Registration
No. 11920 8320 RR0001

